

## Inside this issue...

**Regeneration Dinner 2009** - Reports, perspectives and heaps of encouragement.

**On The Move** - Local churches impacting the Belconnen Community.

**MISSION: School** - CRE ACT and SU working together to train and inspire our Primary Schools workers.

**Soul in the City** - Young people serving God through worship, teaching and practical projects.

**Chill Out Camp Photos** - One of our most successful camps yet!

**Personal profiles and acknowledgements** - Changes in the SU Governing Body.

## Thanks and farewell to SU Chair Margaret Ford



Margaret Ford has origins in SU that go back at least one generation and forward at least one generation. See Spencer Colliver Insert. She has worked as a staff member, as a volunteer on beach missions and in official voluntary roles, most recently as the Chair of the Council of SU in the ACT for five years consecutively.

Margaret has led the Council and the SU movement in the ACT, while being a spouse, a parent, with a day job and recently caring for her late father. She has demonstrated insight,

patience, dependence on God, perspective of history, clarity, communicativeness, prayerfulness, kindness, and administrative faithfulness to detail and document development to provide a foundation for years ahead. She has built and developed a team to carry on the work. She leaves this role with SU in good shape and oriented to the future.

I thank Margaret for her faithful contributions, her way of doing things and for mentoring me into this role. Margaret will continue as a council member.

**Geoff Creelman, Chair**



*Everything in this newsletter requires our constant prayers. There are some pieces of information that we would like to draw your attention to. Look for the 'praying hands' throughout the news letter and add the point to your prayer list.*







**SU ACT has had a wonderful response to Regeneration 2009.** Attendance at the dinner was approximately **320**, an increase of 100 compared with the previous year. Most of the additional 100 were people who had not previously attended an SU event, particularly schools' personnel. The event provided a broader perspective of SU for many of these attendees.

Links have been established with various schools and churches as a direct consequence of the event, with potential to expand SU's work.

We have received much positive feedback on the presentation of the event and the program. In particular, Lin Hatfield-Dodds struck a chord with many. Overall, the event presented clearly and overtly that SU is a Christian organisation putting 'Faith into action' through it's schools ministry.

Although income associated with the event is not yet finalized, there will be a significant increase in the net surplus for the event compared with 2008. At this stage this exceeds \$47,000, with further donations to be received; already \$22,000 above last year's figure. The funding received through **Regeneration 2009** Will make it possible to respond to a number of needs.

### Responses from Schools and Chaplains

Staff enjoyed seeing SU as a whole. It gave them a more comprehensive picture of the work SU does with children and young adults in the ACT. Staff loved hearing from students about how chaplaincy has impacted their lives.  
**Jenni Sander Theodore Primary School**

The school has thought more about camps – a church member who is the school secretary aired the idea of the church sponsoring kids to SU camps. **Lyndal Rogers, Richardson Primary School**

The dinner reinforced the value of what we as chaplains are doing in our schools. I was again reminded of the large support base that we have and was much encouraged as a chaplain. The dinner was a great time of celebrating our work in chaplaincy. I was also encouraged because the role of chaplaincy was clearly reinforced at the dinner for all to hear. I also appreciated how SU camps were promoted for all to hear. It was encouraging for me to see that staff at my table value the positive impact SU Camps make in children's lives. The night also gave me opportunities to network and catch up with other SU supporters and chaplains. **Elysha McKay - Macquarie Primary School**

### Thoughts from Lin Hatfield-Dodds.

Every adult who takes the time to listen and learn with a child or a young person; every adult who is prepared to be vulnerable and share their journey; every adult who carves out time in their busy lives for young people is a hero. Because adults, real adults, can't bring themselves up. The work of organizations like Scripture Union is vital in keeping our social fabric strong and our communities inclusive. SU and other organizations like it play a vital role in respecting and celebrating the uniqueness and dignity of each human person. SU is an organization that works every day across our school and wider communities in deeply respectful relationship with the children and young people it encounters. SU offers kids a chance to connect, belong, and be valued. It offers kids a chance to encounter who they really are, and if they wish, to encounter God. SU journeys with children and young people, and encourages them to find a place in a local community of faith if that's appropriate, so that they can continue to grow into adulthood in an active caring community.

These may include:

- ◆ Maintaining the additional chaplaincy days at both Black Mountain School, and Gold Creek School, commenced as a result of Regen 2008.
- ◆ Responding to requests from schools which currently don't have a chaplain, to assist with funding to catalyse chaplaincy establishment
- ◆ To provide seed funding for the establishment of new SUPA Clubs, and other primary school based ministry.
- ◆ To initiate new camps for young people, and redevelop a leadership training scheme.



*It was a great night and a huge thank you to our organisers, for all their hard work and thank you to all those that came and joined with us in celebrating SU! - Craig Webber CEO*



# On The Move 2009

## SU In the community - Craig Webber

Firstly I want to acknowledge the contribution and efforts of the whole *On the Move* team. Again it was a great event in which everyone used their own gifts and talents in harness with the team. There was a real sense of God-inspired unity as the event unfolded over those 3 days 1-3 April.

I think that Margaret Timpson Park was claimed as a Christian community space, within which God was able to work in so many ways through the team. It was a spirit filled space which was both welcoming and non-threatening for people to enter, literally off the streets. The number of people who attended was estimated at over 1,000, over the 3 days.

My observation is that OTM has achieved outcomes at a number of levels; some of the more expected goals, others less tangible but still extremely valuable. For me these included:

- Opportunities for Christians to share the Good News in both word and deed.
- Ministry with people who had left churches, to reconsider their involvement and find out where to go.

- Linkages and networking between Christian people.
- Directing newcomers to Canberra to churches and Christian agencies.
- Ministry provided one to another-healing opportunities.
- Opportunities for newcomers to the team to experience community outreach within a safe and nurturing environment; to learn and grow.



### *God at work through On The Move - how God works during those three days to touch peoples lives.....*

.....People had the chance to see the church as not just that remote building but active and present in the everyday work place. Many asked which church we were, most were very surprised to find only one church with many bodies.

**Is it all worth it?** Lotte was serving onions and was asked if she spoke Danish, her native tongue. An ensuing conversation saw a young man in Belconnen ask for and receive the gospel in Danish. A family in Australia for less than three weeks as skilled migrants had a conversation that led them to a church on Sunday and a new community. God met them in the music and the words. Others, including team, were encouraged and healed of deep hurts and past experiences. Working together in outwards focused mission reminds us of how much we have in common and how little separates us. **Doug Newman— Rector St Pauls Anglican Ginninderra**

## The Email Prayer list is up and running!!!

This is an exciting development for SU. Under the direction of our Prayer Director Pat Kerr, we are now able to bring you up-to-the-minute prayer needs for SU via email. SU and its programs are entirely dependant on God and the faithful prayers of our supporters.

*If you would like to join our email prayer team  
let us know by emailing your interest to our Prayer Director Pat Kerr:  
[pat.kerr@optusnet.com.au](mailto:pat.kerr@optusnet.com.au)*

**Southside Lighting & Electrical**  
62805655



1 Lithgow Street, Fyshwick  
[www.southsidelighting.com.au](http://www.southsidelighting.com.au)

### Alan Hatfield Acknowledgement

Alan passed away in early June. Our sympathies go out to Beattie and the Hatfield family during this time. Alan was a dedicated supporter of SU for over thirty years and we will miss him.

There will be a tribute included in the next edition of the SU News.

# On The Move 2009

## SU In the community - Craig Webber

Firstly I want to acknowledge the contribution and efforts of the whole *On the Move* team. Again it was a great event in which everyone used their own gifts and talents in harness with the team. There was a real sense of God-inspired unity as the event unfolded over those 3 days 1-3 April.

I think that Margaret Timpson Park was claimed as a Christian community space, within which God was able to work in so many ways through the team. It was a spirit filled space which was both welcoming and non-threatening for people to enter, literally off the streets. The number of people who attended was estimated at over 1,000, over the 3 days.

My observation is that OTM has achieved outcomes at a number of levels; some of the more expected goals, others less tangible but still extremely valuable. For me these included:

- Opportunities for Christians to share the Good News in both word and deed.
- Ministry with people who had left churches, to reconsider their involvement and find out where to go.

- Linkages and networking between Christian people.
- Directing newcomers to Canberra to churches and Christian agencies.
- Ministry provided one to another-healing opportunities.
- Opportunities for newcomers to the team to experience community outreach within a safe and nurturing environment; to learn and grow.



### *God at work through On The Move - how God works during those three days to touch peoples lives.....*

.....People had the chance to see the church as not just that remote building but active and present in the everyday work place. Many asked which church we were, most were very surprised to find only one church with many bodies.

**Is it all worth it?** Lotte was serving onions and was asked if she spoke Danish, her native tongue. An ensuing conversation saw a young man in Belconnen ask for and receive the gospel in Danish. A family in Australia for less than three weeks as skilled migrants had a conversation that led them to a church on Sunday and a new community. God met them in the music and the words. Others, including team, were encouraged and healed of deep hurts and past experiences. Working together in outwards focused mission reminds us of how much we have in common and how little separates us. **Doug Newman— Rector St Pauls Anglican Ginninderra**

## The Email Prayer list is up and running!!!

This is an exciting development for SU. Under the direction of our Prayer Director Pat Kerr, we are now able to bring you up-to-the-minute prayer needs for SU via email. SU and its programs are entirely dependant on God and the faithful prayers of our supporters.

*If you would like to join our email prayer team  
let us know by emailing your interest to our Prayer Director Pat Kerr:  
[pat.kerr@optusnet.com.au](mailto:pat.kerr@optusnet.com.au)*

**Southside Lighting & Electrical**  
62805655



1 Lithgow Street, Fyshwick  
[www.southsidelighting.com.au](http://www.southsidelighting.com.au)

### Alan Hatfield Acknowledgement

Alan passed away in early June. Our sympathies go out to Beattie and the Hatfield family during this time. Alan was a dedicated supporter of SU for over thirty years and we will miss him.

There will be a tribute included in the next edition of the SU News.



# MISSION: SCHOOL 2009

## ★ Karen Baron - CRE Coordinator ACT

How encouraging it was to have over 50 people attend the inaugural MISSION: SCHOOL conference held in Canberra on Saturday, February 28<sup>th</sup>! A joint initiative of the Christian Religious Education (CRE) project and Scripture Union ACT, MISSION: SCHOOL aimed to inspire and train the volunteers who run either CRE programs during teaching time or SUPA clubs during lunch time, in local government primary schools.

Guest speaker Sally Smith, an SRE consultant for NSW, framed the theme for the day by highlighting the fact that we are entering the REAL WORLD of REAL KIDS and schools, and we seek to serve with our gift from God, REAL FAITH. Sally posed the question *'what do we have to offer these kids?'* and with the help of encouraging words, current statistics, modern video clips and Bible verses, suggested that we are the message they need; that when our programs are tailored to serve the real needs of these real children then schools will want to call on us Christians from local churches, who are willing and able to show how real faith intersects with real life issues.



Sally Smith



Karen Baron



The practicalities of teaching and reaching real children, of various ages and abilities, were explored throughout the day. Sally's workshop, along with the individual CRE and SU workshops, resulted in an array of posters, songs, drama and other hands-on experiences being presented. It was most fitting to have Cheryl Clendinning, GodSpace Coordinator, also provide an overview of a Christian education teaching resource that incorporates many such ideas and experiences into an excellent Bible-based and relationship-focused teaching package – GodSpace.

conference next year. Perhaps the feedback from this year will encourage even more people to register:

*"I was encouraged by being in contact with other Christian workers."* ★

*"It helped me to think about what we have to offer and why we're doing what we're doing." It has helped me to think more about the recipients of our message."* ★

*"So many things...where do I start...different ways to teach, working together as a team, all the resources available."* ★

*"I got fresh inspiration to continue with RE teaching – with commitment and enthusiasm! What a mission field that we can impact!"* ★

*"Thanks for the seminar and God bless you!"*

This day of unity was complemented with several speakers providing insight into the respective mission services that currently operate in ACT schools, being Christian Religious Education (a project of the ACT Churches' Council), SUPA clubs, Chaplains and camping opportunities (all Scripture Union projects).

We pray that the day did bless all those in attendance as much as it blessed the organisers! We look forward to showing our support and thanks to Christian volunteers in schools by offering them another MISSION: SCHOOL



## Profile: Geoff Creelman - Chair

### Tell us about yourself.

I am married with three more or less adult children; I have lived in Canberra since

1993, having moved here from Perth. I work in IT project management with ActewAGL.

### How long have you been involved in SU?

I attended an ISCF camp at junior high school, after becoming a Christian used daily bible reading notes, helped to lead 'drawing room meetings', was a leader on beach missions, was a representative and advocate for SU bible reading notes, supported the WA Director when I was in his home group, had my children attend SU camps.

### Why did you want to become involved in SU?

Most recently, because of the value to my children and their friends, and also because of the chaplaincy opportunity: teenager hood particularly is a tough time and frequently a time when people come to know God.

### Why are you so passionate about SU?

Because it is voluntary, it is organised, it has

strong and truthful foundations, it keeps recreating itself, it continues to rely on God for what it needs, it is effective.

### What do you see SU achieving this year?

SU ACT will work on many things this year: growing our links with the churches that we aim to serve, promoting the activities that we believe God has led us into, growing camping, possibly working toward On The Move coming central or south, personnel discovering new talents and opportunities to use them, exploring relationships with complementary movements and groups.

### What are some prayer points that you would like to share with the SU Community?

- ◆ That as a movement we will continue to depend on God's leading, and be obedient even when he takes us to unfamiliar places.
- ◆ For the National School Chaplaincy Program to be continued and extended by the Commonwealth government.
- ◆ Wisdom for chaplains as they serve in Schools

- ◆ More SUPA and SUIS groups to commence with trained and supported leaders.
- ◆ That we will know how to relate to churches in a variety of ways.
- ◆ For continued glad generosity by financial supporters.
- ◆ That volunteers and staff people will be increasingly available for growing opportunities.



Incoming Chair Geoff Creelman thanking outgoing Chair Margaret Ford at the 2009 Regeneration Dinner



**Save a tree!  
Join our SU  
News email list.**

Drop us a line at  
[beth@suact.org.au](mailto:beth@suact.org.au)  
If you would like to join up.

# SOUL SURVIVOR

SoulintheCity 2009 was a conference held in Canberra for young people. Soul aimed to encourage, refresh and inspire youth to live out their faith in a passionate, and practical way.

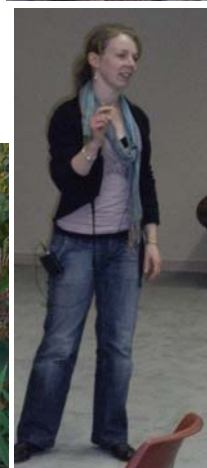
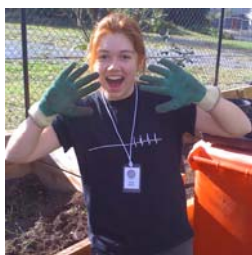
## Chaplains Assist Soul Survivor Delegates with School Projects

### Michael Clancy reports

Delegates to the Soul Survivor Conference in Canberra took part in a number of community outreach projects. Two ACT government schools that have SUACT chaplains were involved in the projects.

Black Mountain School had a group of 24 delegates from Canberra, Wollongong and Newcastle who undertook a gardening program at the school over two afternoons. North Ainslie Primary School had a group of delegates from Sydney, Tamworth and Canberra who painted furniture and classrooms and gardened.

Both schools were moved by the fact that a group of Christians who had no previous connections to the schools would come and help in this way. At the conclusion of the projects both groups met at North Ainslie Primary school for a BBQ. Thanks goes out to Chaplains Chris Golding and Jason Aquilina for making the projects happen on the ground and to the school staff who also assisted in the projects.



Elysha McKay



### Craig reports:

**Soul in the City** was held from 21-25 April 2009 with attendance over 500 young people, based at EPIC. SU made a major contribution to this event, in summary:

- ◆ SU presented 2 seminars on schools-based Christian mission presented by Chaplain Elysha McKay, which 70 young people attended. The title was; 'Me, a Missionary in My Own Backyard!'
- ◆ Chaplains at 2 inner city schools- North Ainslie & Black Mountain-coordinated groups of 25 young people in school-based community projects (coordinated by-Michael).
- ◆ An SU display stall was provided by Sam Gledhill, and staffed by various chaplains; providing a constant presence throughout the event.
- ◆ Altogether SU engaged meaningfully with 120 of the young people at Soul through these avenues.

Plus some chaplains were attendees with young people; and of course Brent Smith, Narrabundah College Chaplain,

**This is part of our SUACT strategy to engage with more 'youth' towards further involvement. I was really pleased and proud of the manner in which SUACT Chaplains got involved. I saw professionalism and 110% commitment to the effort.**

***I believe that this was a very effective and relevant ministry opportunity! - Craig Webber***

## SOME EXTRACTS FROM ELYSHA'S SEMINAR:

### "Authentic Followers of Jesus Seek to Know and Imitate God

What influences your perspectives on life and the decisions you make? Can I suggest that if we want to be authentic followers of Jesus we need to seek to know and imitate God. Before any of us race out to engage in 'mission' we need to know God, discover his plans, his perspective and be full of his Spirit. On earth, Jesus was committed to the mission of 'preaching good news to the poor, proclaiming freedom for prisoners and recovery of sight for the blind, and releasing the oppressed' [Luke 4:18-19]. He was compelled by God's word. Whilst carrying out this mission he was often persecuted and misunderstood by those who were uninformed and thought they knew better.

Is it possible to imitate God and carry out his mission without knowing him? Why is it essential for a follower of Jesus to draw near to God in prayer? If we are keen to do mission for God it's important that we actually do get on board with what His mission is and how we can carry that out in the context of our local and global world. As Jesus is the giver of life, we also need to draw near to him so that we can be renewed and empowered with the fullness of his spirit so we can embody a lifestyle of service, sharing the love and good news that we ourselves have freely received.

Let's be a courageous generation ready to step out and trust God when he calls us to do both little and big things. 'Then he said to them, "The harvest is plentiful, but the labourers are few. Pray to the Lord of the harvest, that he may send out labourers into his harvest."' [Luke 10:2]"

# SOUL SURVIVOR

SoulintheCity 2009 was a conference held in Canberra for young people. Soul aimed to encourage, refresh and inspire youth to live out their faith in a passionate, and practical way.

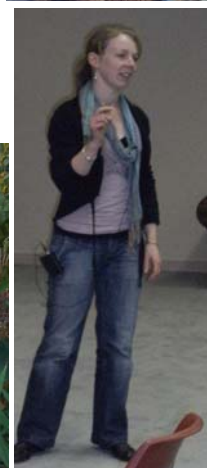
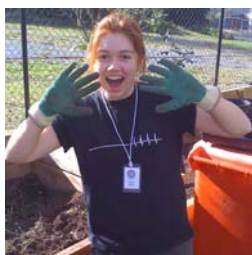
## Chaplains Assist Soul Survivor Delegates with School Projects

### Michael Clancy reports

Delegates to the Soul Survivor Conference in Canberra took part in a number of community outreach projects. Two ACT government schools that have SUACT chaplains were involved in the projects.

Black Mountain School had a group of 24 delegates from Canberra, Wollongong and Newcastle who undertook a gardening program at the school over two afternoons. North Ainslie Primary School had a group of delegates from Sydney, Tamworth and Canberra who painted furniture and classrooms and gardened.

Both schools were moved by the fact that a group of Christians who had no previous connections to the schools would come and help in this way. At the conclusion of the projects both groups met at North Ainslie Primary school for a BBQ. Thanks goes out to Chaplains Chris Golding and Jason Aquilina for making the projects happen on the ground and to the school staff who also assisted in the projects.



Elysha McKay



### Craig reports:

**Soul in the City** was held from 21-25 April 2009 with attendance over 500 young people, based at EPIC. SU made a major contribution to this event, in summary:

- ◆ SU presented 2 seminars on schools-based Christian mission presented by Chaplain Elysha McKay, which 70 young people attended. The title was; 'Me, a Missionary in My Own Backyard!'
- ◆ Chaplains at 2 inner city schools- North Ainslie & Black Mountain-coordinated groups of 25 young people in school-based community projects (coordinated by-Michael).
- ◆ An SU display stall was provided by Sam Gledhill, and staffed by various chaplains; providing a constant presence throughout the event.
- ◆ Altogether SU engaged meaningfully with 120 of the young people at Soul through these avenues.

Plus some chaplains were attendees with young people; and of course Brent Smith, Narrabundah College Chaplain,

**This is part of our SUACT strategy to engage with more 'youth' towards further involvement. I was really pleased and proud of the manner in which SUACT Chaplains got involved. I saw professionalism and 110% commitment to the effort.**

***I believe that this was a very effective and relevant ministry opportunity! - Craig Webber***

## SOME EXTRACTS FROM ELYSHA'S SEMINAR:

### "Authentic Followers of Jesus Seek to Know and Imitate God

What influences your perspectives on life and the decisions you make? Can I suggest that if we want to be authentic followers of Jesus we need to seek to know and imitate God. Before any of us race out to engage in 'mission' we need to know God, discover his plans, his perspective and be full of his Spirit. On earth, Jesus was committed to the mission of 'preaching good news to the poor, proclaiming freedom for prisoners and recovery of sight for the blind, and releasing the oppressed' [Luke 4:18-19]. He was compelled by God's word. Whilst carrying out this mission he was often persecuted and misunderstood by those who were uninformed and thought they knew better.

Is it possible to imitate God and carry out his mission without knowing him? Why is it essential for a follower of Jesus to draw near to God in prayer? If we are keen to do mission for God it's important that we actually do get on board with what His mission is and how we can carry that out in the context of our local and global world. As Jesus is the giver of life, we also need to draw near to him so that we can be renewed and empowered with the fullness of his spirit so we can embody a lifestyle of service, sharing the love and good news that we ourselves have freely received.

Let's be a courageous generation ready to step out and trust God when he calls us to do both little and big things. 'Then he said to them, "The harvest is plentiful, but the labourers are few. Pray to the Lord of the harvest, that he may send out labourers into his harvest."' [Luke 10:2]"



# Chaplaincy Update...

Praise God for the creation of a brand new chaplaincy position at Taylor Primary School, Funded jointly by the school and SU, with SU providing partial funding through donations made at the Regeneration Dinner.

Chaplaincy Vacancies: Caroline Chisholm School and Melba Copland Secondary School - Pray that these positions will be filled.



## SU Victoria Bushfire update

" in the days following Black Saturday, I spent my time at Whittlesea Secondary College, offering support to students and staff, hearing their stories and sharing their grief. At the request of the Chaplain I helped to set and staff a chapel space for students to come and grieve, reflect, write messages for those who died and messages of hope for those who had been affected by the fires. The Chapel space remained open for the whole term, available to students and staff, and was well used over the weeks.

At the conclusion of term one, the college held a special memorial service for the whole school, followed by a BBQ Lunch and an afternoon festival. Whittlesea ELEVATE was able to provide a team of volunteers to run extreme games activities for the afternoon festival, which was well ap-

Below is an excerpt from the Victoria SU News letter.

Kylie Hunter is the North East Regional Worker and Schools Admin Officer for ELEVATE VIC

preciated by our students.

Pray for students, Staff, The ELEVATE Team and other volunteers that will be working in the school. Pray for wisdom and strength.

The positive thing about the emergency response phase to such a crisis is that it brings people together and because of the relationships built between churches, schools, council and other youth organisations, two groups have been formed to respond to the needs of the affected communities. Combined Youth Leaders of Whittlesea and Kingslake is a collection of local people and experienced youth workers who meet regularly to share, identify the needs of the young people and plan together to respond to identified needs.

Please especially pray for the years 5-7 students as this group is one that seems to be affected the most by the trauma.

The second group is a Children's Ministry Taskforce. We committed to meeting together regularly to plan and coordinate all children's ministry to ensure that churches are working together and with the community

Please pray as we work together. The greatest need is volunteers. Pray for good decisions regarding program and activity choices.

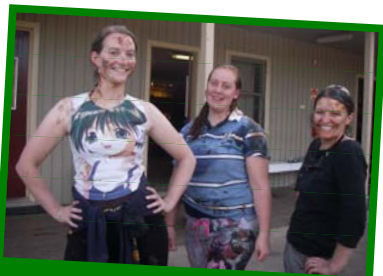
Doors are opening, people are offering support in many ways and there are many possibilities for ministry to be considered in the coming months."

Thankyou to those who have already responded to this vital need!

## Chill Out 2009 - "Mission Impossible"



'Chocolate freckle anyone??'



Your fearless leaders (L-R) Becky Marshall - Director Bethany Morton Katie Pratt—Director



'Look what I found buried in the sand!!'



'Call me Bond...James Bond!'



'Why did I sign up for messy games??'



'if I poke my tongue out far enough, maybe I can slurp up some of this straw-berry custard'

### END OF FINANCIAL YEAR REMINDER!

All donations to the Scripture Union Schools Ministry Fund are Tax Deductible. Any and all of SU's works in and associated with schools are eligible recipients. Gifts may be earmarked for a particular ministry area, and will be faithfully allotted. Gifts may be provided in the following ways:

Direct electronic transfer to the SU Schools Ministry Fund account:  
Scripture Union ACT Inc.  
BSB 062907  
A/c No 905712.

Via Credit card, over the phone-call Teryl on 6251 3677

By cheque, or even cash!

**Thank You!**

